



SWING GATE QUESTIONNAIRE

Every gate is unique.

This info is designed to guide you through the options available with automatic gates.

A basic description of your property and ideal automatic gate will help your gate installer quote a suitable solution and efficient installation method.

Because every gate is unique, the time spent detailing this form will help you and your gate guys get off to the perfect start.

CONTACT

Date:

Name:

Mobile:

Email:

Address:

Suburb:

Date required:

GATE DETAILS

New or existing gate:

New Existing

Gate type:

Single Double

Gate weight:

kgs

Gate opens:

Inward Outward Undecided

Gate Material:

Steel Aluminium Timber

New or existing fence:

New Existing

Gate infill: (% of gate covered)

Gate Post Material:

SITE CONDITIONS

Max. number of operations:

open-close per hour

Power point at gate:

Yes No

If no, how far to the nearest power point:

metres

Solar power:

Yes No

Wind conditions at site:

Low Medium High

New or existing Driveway:

Existing New

Driveway surface:

Pavers Concrete Gravel TBA

ACCESSORIES

These days many homes have automatic garage doors, shutters, lighting, heating, sprinkler systems etc. Homeowners expect more from a gate than simply open and close commands. Including one or more of these accessories will let you get the most from your new automatic gate.

Find these accessories at easygate.com.au

EXTRA REMOTES

Our kits come with either one or two remotes. How many remotes do you need in total?

Number of Remotes

OBSTACLE SENSORS

Photocells monitor the gateway to halt the gate instantly if the beam is crossed or blocked.

Mhouse Safety Kits include one pair of photocells, however a second pair cover the entire gate area.

WIRELESS KEYPAD

A keypad lets you or a visitor open a gate without a remote.

VIDEO INTERCOM

A stand-alone intercom system to manage visitors at the gate. Control access with handsfree talking, indoor gate release and video monitoring.

BACKUP BATTERY

Emergency power backup is available for 24V systems. The backup battery kicks in to operate the gate in the event of mains power failure.

ELECTRIC LOCK

An electric lock has two purposes. Added security, plus stops the damage caused to the motors and gates if a gate is forced open.

SIGNAL BOOSTER WARNING LIGHT

The Booster Light tells anybody within eyesight the gate is about to open-close. The added bonus is the built-in signal booster to improve the range of a remote control.

PIGGYBACK

Connect an existing garage door to the new gate Remote. Lets the user operate the automatic Garage Door and gate with the same remote.

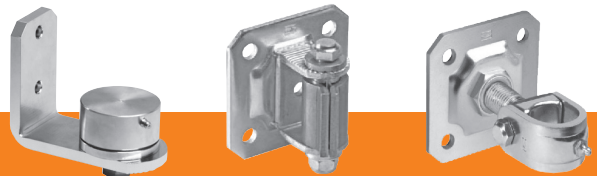
HARDWARE

Tick if you'd like heavy duty hinges to suit your automatic gates.

HINGES

Gate motors need to be powerful to force open and closed gates sometimes weighing hundreds of kilograms. And a windy day can make a gate a lot harder to open or close.

Regular gate hinges aren't designed to handle the forces created by a motor, or be opened many times each day. It's not unusual for them to fail completely. Yet sometimes a gate owner will insist on the cheapest option.



GATE STOPS

Gate Stops play an important role.

- Protection: The hard stop holds the gates in place, protecting gates, motors and hinges from wind damage.
- Noise reduction: Stops gate rattle and banging during high winds.
- Finish: Keeps the gap between closed gates straight and at a minimum.
- Gate motors work better when they have Stops as gate limits.

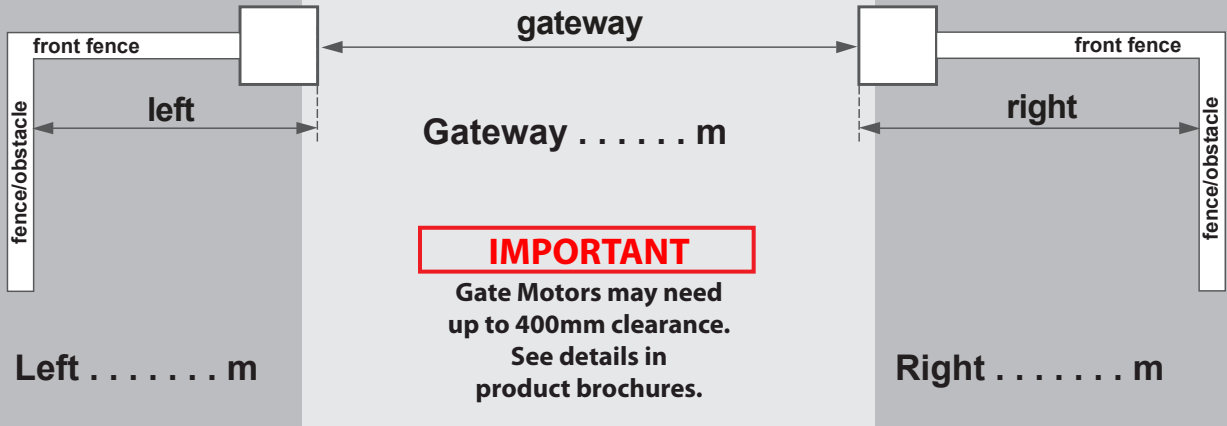


Gate Stop - Closed

Gate Stop - Open

PROPERTY DETAILS

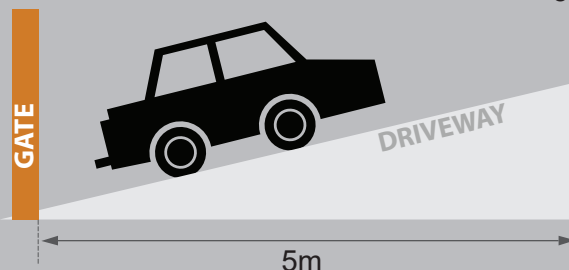
GATE CLEARANCE



POST SPECS



UPHILL DRIVEWAY



Does the driveway incline within the first 5m of the gate?

Yes No